

SPARK Linear Burner System Outdoor



Outdoor living just got more refined



Spark's LBS Outdoor brings the cutting-edge look and design versatility of our indoor fireplaces to your outdoor space. These innovative products will enhance any outdoor architectural feature or landscape design.



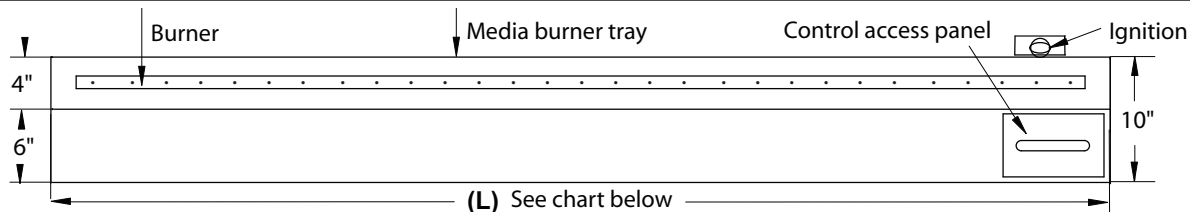
SPARK
modern fires

SPARK Linear Burner System Outdoor



- Stainless steel construction
- All internal components are waterproof
- Electronic ignition (no standing pilot)
- Stainless steel weather cover
- Stainless steel weather cover
- No hassle and mess of building a wood fire or clean up afterwards
- Easy way to change appearance and functionality of any outdoor space
- Customizable installation and design options due to a variety of sizes and fires object options

Top view



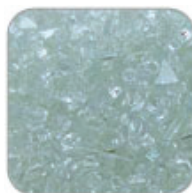
Model No.	Overall length (L)	Burner length	Input Rate (N.G. / LP), Btu/hr
LOD24	24"	20"	41,000 / 33,500
LOD36	36"	32"	61,000 / 54,000
LOD48	48"	44"	82,000 / 72,000
LOD60	60"	56"	102,000 / 90,000
LOD72	72"	68"	116,000 / 110,000
LOD84	84"	80"	129,000 / 128,000
LOD96	96"	92"	142,000 / 146,500

Why pick a Spark Linear Burner System Outdoor?

- Enhances any outside environment to dynamic gathering space
- Fast and easy to start with remote control
- More environmentally friendly because burning wood produces gases and fine particles that can cause health issues
- Warmth from heat output makes outdoor evening gatherings more comfortable
- Warmth from heat output allows extended use of outdoor spaces into Spring and Fall in colder climates



Optional Media for Tray:



Glass Clear



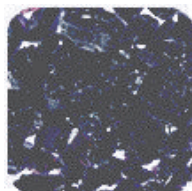
Glass Green/Blue



Glass Amber



Glass Dark Green



Glass Amethyst



Glass Black



Basalt Stones



Lava Rocks

Woodbridge Fireplace
www.woodbridgefp.com

SHOWROOM ADDRESS:
 1305 Meyerside Dr.,
 Mississauga, L5T 1C9
 Tel: 905-564-3001