



Regency F5100

Extra Large Hybrid Catalytic Woodstove
Featuring Eco-Boost Technology



Largest Woodstove Available in North America

Regency introduces an innovative combination of Eco-Boost technology and catalytic combustor creating an unrivalled clean burning, highly efficient woodstove with consistent, significant heat. This is the largest woodstove in the Regency line, and the largest of its kind available anywhere.

All Day Burn from a Single Load of Wood

The F5100 is capable of burning a 90 lb wood load for over 30+ hours* while delivering even, substantial heat. One of the most environmentally friendly woodstoves available, Regency's F5100 features Eco-Boost technology allowing the F5100 to deliver less than 1.5 grams per hour of emissions. And, with efficiency better than 85% the F5100 is one of the most cost effective woodstoves on the market. Combine these amazing stats with durable, attractive styling and the best warranty in the industry, you will find nothing to match this stove anywhere.

Model	F5100
Max. Cordwood BTUs	80,000
EPA Certified	Yes
Typical Sq. Ft. Heated	2,250+
Efficiency	85.48%
Maximum Log Size	22"
Burn Time (Typical)*	30+ hours
Emissions (grams/hr)	1.46 grams
Firebox Size	4.42 cu. ft.
Flue Size	8"

F5100 Hybrid Catalytic Technology

Eco-Boost Technology

Featuring a unique heavy-duty, secondary stainless steel air tube that adds super preheated oxygen to the exhaust gasses to boost the performance of the catalytic combustor. The secondary air tube with the catalyst ensures the fuel is burned to its full potential resulting in low emissions and high heat output.



Catalytic Combustor

The catalytic combustor is a durable ceramic honeycomb filter coated with platinum and palladium. The catalytic combustor helps create long, consistent heat output by slowly and thoroughly burning unused fuel that would normally go up the chimney as smoke. This results in total combustion and only 1.46 gms/hr emissions.

NEW = Hybrid Catalytic Technology

Convactor Airmate

An optional airmate can be installed to help direct warm air forward, further into the room.

Heavy Duty Stainless Steel Flame Shield

Provides turbulence and better distribution of gasses over the catalyst. Also protects the catalyst from direct flame exposure.

Air wash System

When in the active zone, the Regency air wash system provides air flow over the glass keeping the glass clean and providing an excellent view of the roaring fire.

Catalytic Airflow

When the by-pass damper is closed combustion air is directed through the catalytic combustor.

Single Lever Air Control

Easily controls the heat output and size of the fire by adjusting the amount of air intake.

Extra Large Optional Ash Drawer

The concealed large 0.55 cu. ft. ash drawer allows for easy maintenance and cleaning. Ash drawer includes a spill proof cover to keep your home clean as you empty the drawer.

Interior Brick Liner

The brick lined firebox maintains the appropriate heat levels within the firebox, assisting in achieving a complete and clean burn.

Simple Temperature Thermometer

The easy to read thermometer has two zones: non-active and active. The thermometer monitors the temperature of the bypass lever (when the thermometer is in the active zone) and engage catalytic activity.

Cast Bypass Damper

The cast bypass damper is opened when loading and during initial startup, then closed to activate the catalytic combustor once the active temperature zone is reached. A simple bypass lever is used to close the damper and engage the catalytic combustor.

Temperature Activated or Manual Blower

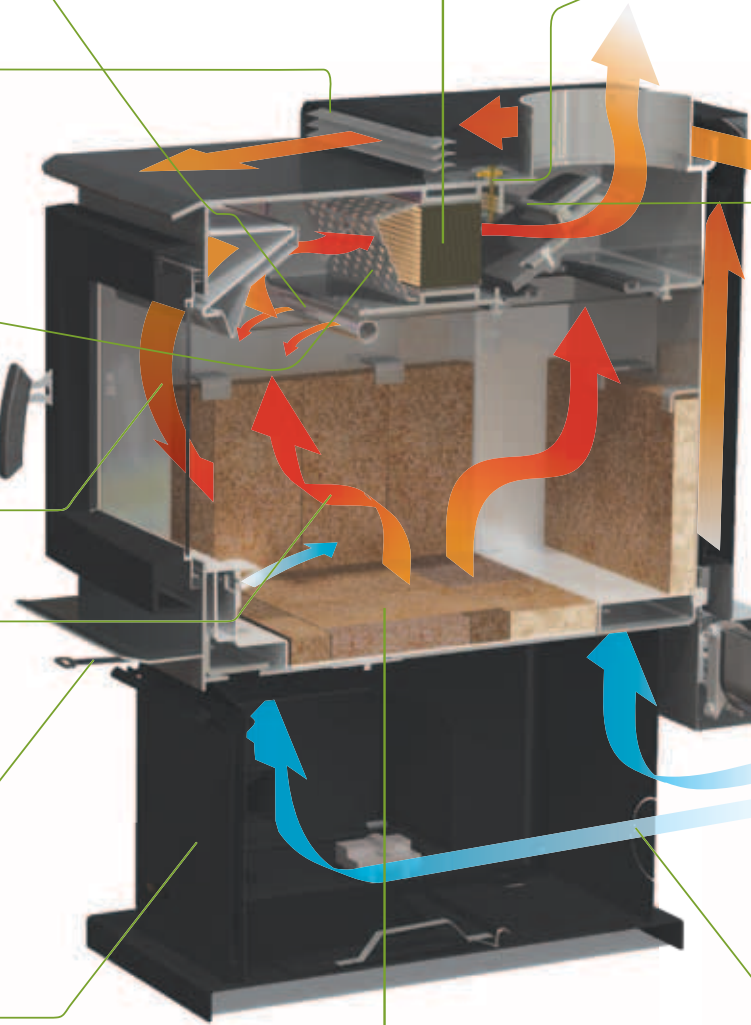
The 2-speed blower quickly distributes heat throughout the room. The blower is controllable using either a manual or automatic on/off switch.

Blower Air

Air from the room is drawn into the blower and heated in the Convactor Airmate, then directed back into the room.

Room Air

Air from the room is drawn in through the bottom of the stove for the primary and secondary combustion.

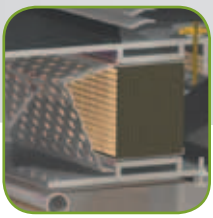


Standard Features

- Catalytic Stove with Eco-Boost Technology
- 4.42 cu. ft firebox accommodating 22" logs
- Single lever bypass control to engage catalyst
- Single-lever air control to adjust heat output
- Brick-lined firebox
- Rear heat deflector
- Airwash system helps keep the glass clean
- Discreet ashlip
- Contemporary cast iron door in black with 180 sq inch viewing area
- 170 degree opening door for easy loading

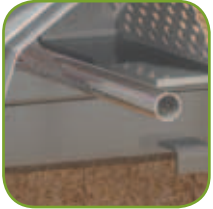
Optional Features

- Extra large ash drawer with cover
- Two-speed blower
- Convactor airmate
- Outside air kit



Catalytic Combustor

The catalytic combustor permits the wood stove to burn slowly, providing a long, consistent burn, delivering 30 hours or more* of heat with a single load of wood. Fuel is utilized to its full potential with only 1.46 g/hr of emissions and 85.48% efficiency!



Eco-boost Technology

A heavy duty, secondary air tube is strategically placed to ensure maximized re-burn of products of combustion before making their way to the combustor. Serving as a pre-filter, the Eco-boost system maximizes efficiency and prolongs the life of the catalytic combustor by decreasing its exposure to harmful combustion substances.



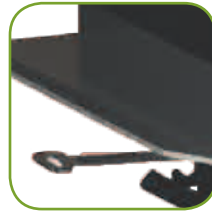
All Day Burn

At 4.42 cu. ft. the F5100 is the largest firebox available! Load up to 90 lbs of wood at a time for 30+ hours* of consistent, reliable heat. Convenient loading of 22" logs north to south and east to west.



Large View Cast Iron Door

A heavy duty cast iron door offers 180 square inches viewing area delivering an excellent view of the roaring fire. The door opens to almost 180° making wood loading easy!



Single-Lever Air Control

A simple single-lever air control conveniently located at the front of the stove can be adjusted to meet home heat requirements, from a hot burn to a smoldering glow that just keeps the chill away.



Warranty

With over 30 years of wood stove manufacturing expertise, along with the most comprehensive warranty in the industry, the F5100 is guaranteed to deliver a lifetime of dependable heat. The catalytic combustor is covered for the first six years. Consult the manual for complete details.

Compare for yourself and find out why the Regency F5100 is your best choice catalytic wood stoves!

	Regency F5100	Closest Competitive Catalytic Wood Stove
Technology	Custom designed Eco-boost™ technology (developed in 2012)	Catalytic only (20+ year old technology)
Heating capacity	2,250+ sq. ft. **	2,000+ sq. ft.
Firebox capacity	4.42 cu. Ft.	4.32 cu. Ft
Maximum wood load	90 lbs ***	80 lbs
Maximum BTUs per load	765,000 ***	680,000
Log size (front-to-back)	22 in.	17 in.
Log size (side to side)	22 in.	23 in.
Emissions	1.46 g/hr	1.76 g/hr
Weight	520 lbs	410 lbs
Efficiency	85.48%	82.50%
Door	25 in. W x 16 in. H 37.6 lbs heavy cast iron	19 in. W x 13.5 in. H 12.8 lbs welded steel
Viewing area	180 sq. in.	150 sq. in.
Loading opening	20.125 in. W x 10 in. H	17.69 in. W x 9.77 in. H
Blower (optional)	125 CFM	105 CFM
Bypass assembly	heavy cast iron	steel
Air control	single lever, easy front access	dial, rear of stove
Firebox construction	heavy duty 3/16" steel	lighter 10 guage steel
Ash pan (optional) capacity	0.55 sq. ft.	0.22 sq. ft.
Positive cam latching system	yes	no

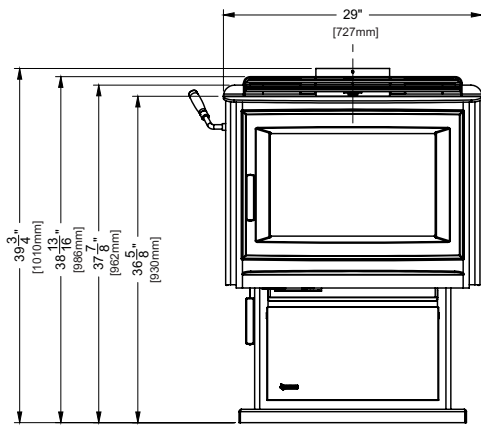
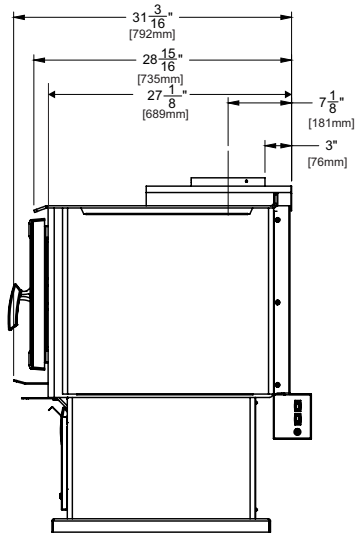
* Length of burn time and BTU output depend upon wood species used, moisture content of wood, elevation, climate conditions and installation.

** Varies depending on home floor plan, house layout, heat loss of the house and quality/moisture content of wood.

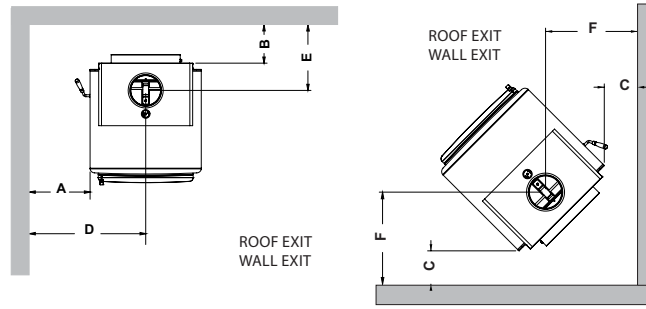
*** Based on 8,500 BTU's per lbs.

Specifications

Dimensions

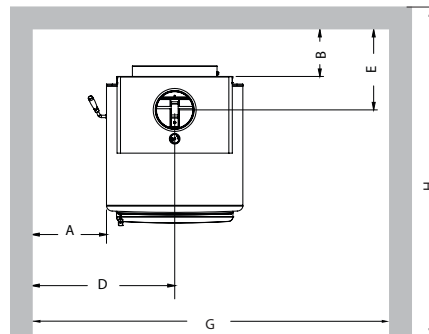


Minimum Clearances to Combustible Materials



Residential Close Clearance Listed Double Wall Pipe	FROM UNIT		FROM CORNER		FROM FLUE CENTER-LINE		MIN. WIDTH & DEPTH OF ALCOVE	
	A	B	C	D	E	F	G	H
F5100 with Airmate or Rear Deflector	11"	10"	8"	25-1/2"	17-1/8"	22-1/2"	63"	48"

Mobile Home Close Clearance Listed Double Wall Pipe	FROM UNIT		FROM CORNER		FROM FLUE CENTER-LINE		MIN. WIDTH & DEPTH OF ALCOVE	
	A	B	C	D	E	F	G	H
F5100 with Airmate or Rear Deflector	11"	10"	8"	25-1/2"	17-1/8"	22-1/2"	63"	48"

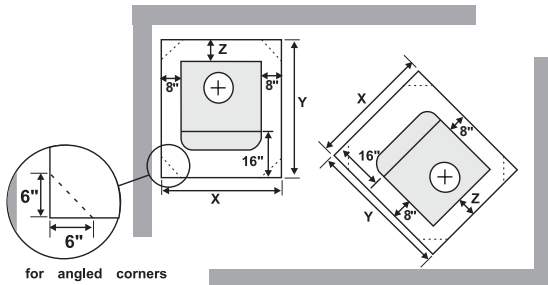


Minimum Alcove Clearance to Combustible Materials

The Regency Freestanding models have been alcove approved and must be installed with a listed double wall connector to the ceiling level.

Note: Minimum alcove ceiling height - 83" Vertical Termination

Floor Protection



Floor Protection	Residential Close Clearance			Mobile Home Close Clearance		Alcove	
	X	Y	Z	Y	Z	Y	Z
USA	45"	49-1/8"	8"	49-1/8"	8"	49-1/8"	8"
Canada	45"	53-1/8"	8"	53-1/8"	8"	53-1/8"	8"

your regency dealer

These are guidelines only, subject to change without notice. Always refer to the actual product manual that comes with your unit for specific, current dimensions and clearances.